

CONSILIUL LOCAL AL ORAȘULUI ȘIMLEU SILVANIEI
SPITALUL ORĂȘENESC "PROF. DR. IOAN PUȘCAȘ" ȘIMLEU SILVANIEI

RO - 455300, Șimleu Silvaniei, Str. G. Coșbuc, Nr. 29, Jud. Sălaj
Tel.: 0260 - 678.156, 679.056, 679.127, Fax: 0260 - 679.237
Email: spitalsimleu@yahoo.com, Web: www.spitalsimleu.ro
CIF: 4291530; Operator date cu caracter personal nr. 35580



Nr. 1291 din 08.05.2026

CENTRALIZATOR STAT DE FUNCȚII
la data de 01.05.2026

	Nr.posturi aprobate si normate la 10.01.2025	Nr.posturi aprobate si normate la 01.05.2026
I. Bugetul de Stat - Transferuri	11	15
II. Ambulatoriu integrat (cabinete)	30	28
III. Spital (sectii, compartimente, laboratoare)	270	268
Total general	311	311

Manager,
Dr.chim.Marcela Coltau

Compartiment RUNOS,
Ec.Alexuța Maria

STAT DE FUNCTII
valabil cu data de 01.05.2026

Valabil conform Legii-cadru 153/2017 si a OUG 19/2024

Nr. crt.	Funcția, gradul sau treapta profesională conform Legii-cadru 153/2017 și a OUG 19/2024	Specialitatea	Grada	Nivelul studiilor	Cuatum post	Numele și prenumele	Obs.
0	1	2	3	5	6	14	15
	COMITET DIRECTOR						
1	MANAGER	CHIMIST PRINCIPAL		II S	1	DR.CHIM.COLTAU MARCELA	SPOR DOCTORAT
2	DIRECTOR MEDICAL INTERIMAR	MEDIC PRIMAR (gr.5)		II S	1	DR.MUSTE LILIANA GENTIANA	
3	DIRECTOR FIN.CTB INTERIMAR	ECONOMIST IA		II S	1	EC.SZABO MARIANA	
	TOTAL				3		
	LABORATOR RADIOLOGIE SI IMAGISTICA MEDICALA						
4	MEDIC PRIMAR	RADIOLOGIE	4	S	1	DR.FILEP ALEXANDRU	
5	MEDIC PRIMAR	RADIOLOGIE	5	S	1	DR.PASCA IONELA ADELA	CTP 3 ORE
6	MEDIC SPECIALIST	RADIOLOGIE	3	S	1	DR.URSU DANIEL	
7	MEDIC SPECIALIST	RADIOLOGIE	2	S	1	VACANT	
8	TEHNICIAN PRINCIPAL	RADIOLOGIE	4	S	1	MARTIN MARIA MIRABELA	
9	ASISTENT PRINCIPAL	RADIOLOGIE	5	S	1	BRANDUSAN CLAUDIA MARIA	
10	TEHNICIAN PRINCIPAL	RADIOLOGIE	3	S	1	SIREAG ALEXANDRA	
11	TEHNICIAN PRINCIPAL	RADIOLOGIE	2	S	1	SANDOR FLAVIA MIHAELA	
12	ASISTENT PRINCIPAL	RADIOLOGIE	5	PL	1	MARIAN MONICA GIULIA	
13	ASISTENT PRINCIPAL	RADIOLOGIE	3	PL	1	SUTEU ANITA	CIM SUSP.
	TOTAL				10		
	LABORATOR ANALIZE MEDICALE						
14	MEDIC PRIMAR	LAB.ANALIZE M	5	S	1	DR.GHITIU ANDREEA CRISTINA	CTP 5 ORE/SAPTAMANA
15	MEDIC SPECIALIST	LAB.ANALIZE M	4	S	1	DR.POP VASILE GABRIEL	
16	MEDIC PRIMAR	LAB.ANALIZE M	5	S	1	DR.BONICA ROMAN	CIM DET
17	CHIMIST PRINC.	LAB.SEF LAB.	II	S	1	VACANT -VAC. TEMPORAR	
18	CHIMIST PRINC.	LAB.	5	S	1	SZISZIK OTILIA	CHIM. COORD.
19	CHIMIST	LAB.	5	S	1	PASCA DANIELA GINA	
20	BIOLOG	LAB.	1	S	1	VACANT	
21	ASISTENT PRINCIPAL	LAB.	5	S	1	KISS GYONGYVER	CIM DET
22	ASISTENT PRINCIPAL	LAB.	5	S	1	MAXIM MARIANA	
23	ASISTENT PRINCIPAL	LAB.	5	PL	1	SANDOR MARIA RAMONA	CIM 1/2 NORMA
24	ASISTENTA	LAB.	0	PL	1	SIRCA ANITA	
25	INFIRMIERA	LAB.	5	M	1	HARI RODICA	
	TOTAL				12		
	SECTIA MEDICINA INTERNA						
	Nr. paturi = 75 din care: 45 paturi Medicina interna, 15 paturi Gastroenterologie, 15 paturi Cronici						
26	MEDIC PRIMAR	MED.INTERNA	II	S	1	DR.MIHAESCU MIHAI	SEF SECTIE
27	MEDIC PRIMAR	MED.INTERNA	5	S	1	DR.KUN CORNELIA	
28	MEDIC PRIMAR	MED.INTERNA	5	S	1	DR.PASCA RADU L.	SPOR DOCTORAT
29	MEDIC PRIMAR	MED.INTERNA	5	S	1	DR.DOMUTA EUGEN IOSIF	
30	MEDIC PRIMAR	MED.INTERNA	5	S	1	DR.MOLDOVAN MARIA	SPOR DOCTORAT
31	MEDIC SPECIALIST	MED.INTERNA	3	S	1	DR.BALOG ANAMARIA SIMINA	CIM SUSP.
32	MEDIC PRIMAR	GASTROENTER	5	S	1	DR.TEUSDEA COSMIN N.	
33	ASISTENT PRINCIPAL	MEDICALA	5	S	1	MOS CATALINA MARIA	ASIST.SEFA
34	ASISTENT PRINCIPAL	MEDICALA	5	S	1	FORTIS RODICA	
35	ASISTENT PRINCIPAL	MEDICALA	5	PL	1	CLEJAN JANINA	
36	ASISTENT PRINCIPAL	MEDICALA	5	S	1	GHETIE SIMONA	
37	ASISTENT PRINCIPAL	MEDICALA	5	S	1	REDES LENUTA	CIM DET
38	ASISTENT PRINCIPAL	MEDICALA	5	S	1	PORDEA CODRUTA LINDA	
39	ASISTENT PRINCIPAL	MEDICALA	5	S	1	POP MARIA	
40	ASISTENT PRINCIPAL	MEDICALA	5	PL	1	BODA ELVIRA	
41	ASISTENT PRINCIPAL	MEDICALA	5	PL	1	TEJAN ANGELA	
42	ASISTENT PRINCIPAL	MEDICALA	3	PL	1	CHIS IOANA	
43	ASISTENT PRINCIPAL	MEDICALA	5	PL	1	FODOREAN MARIANA	
44	ASISTENT PRINCIPAL	MEDICALA	5	PL	1	PRIAN TEODORA	
45	ASISTENT PRINCIPAL	MEDICALA	5	S	1	DEBRE EVA MONIKA	
46	ASISTENT PRINCIPAL	MEDICALA	5	S	1	ZAHARIE LAVINIA	
47	ASISTENT PRINCIPAL	MEDICALA	5	PL	1	NEGREAN ANGELA	
48	ASISTENT PRINCIPAL	MEDICALA	2	PL	1	PURCAR SIMONA,	
49	ASISTENT PRINCIPAL	MEDICALA	2	PL	1	PAP NOEMI CRISTINA	
50	ASISTENT PRINCIPAL	MEDICALA	5	PL	1	RUS CLAUDIA	
51	ASISTENTA	MEDICALA	3	PL	1	BALLA HENRIETTA TUNDE	
52	ASISTENTA	MEDICALA	1	PL	1	VACANT	
53	INFIRMIERA	MEDICALA	5	M	1	VACANT	

54	INFIRMIERA		1 M	1	VACANT	
55	INFIRMIERA		4 M	1	VACANT	
56	INFIRMIERA		5 M	1	MAN DORINA	
57	INFIRMIERA		4 M	1	VAIDA NICOLETA	
58	INFIRMIERA		5 M	1	TOTOS NATALIA CARMEN	
59	INFIRMIERA		4 M	1	CORDIS PAULA TUNDE	
60	INFIRMIERA		5 M	1	FARNAS DANIELA	
61	INFIRMIERA		3 G	1	GERGELY EVA	
62	INFIRMIERA DEBUTANTA		3 M	1	KISS MARIANA	
63	INFIRMIERA DEBUTANTA		3 M	1	NEGREAN IOANA-MARIANA	
	TOTAL			38		
	SECTIE CHIRURGIE GENERALA cu Comp.ORTOPEDIE-TRAUMATOLOGIE si Comp.UROLOGIE					
	Nr.paturi = 35 din care: 20 paturi Chirurgie generala ; 10 paturi Ortopedie-traumatologie si 5 paturi de Urologie					
64	MEDIC PRIMAR	CHIRURGIE GEN	5 S	1	DR.TEPES ONEA VIOREL	
65	MEDIC SPECIALIST	CHIRURGIE GEN	2 S	1	DR.NECULA RAZVAN	
66	MEDIC SPECIALIST	CHIRURGIE GEN	2 S	1	VACANT	
67	MEDIC PRIMAR	CHIRURGIE GEN	3 S	1	DR.FORIS ANAMARIA LIGIA	
68	MEDIC SPECIALIST	UROLOGIE	2 S	1	DR.ENOIU RADU	
69	MEDIC PRIMAR	ORTOPEDIE TR.	4 S	1	DR.BUTCOVAN SORIN D	SEF SECTIE
70	MEDIC PRIMAR	ORTOPEDIE TR.	4 S	1	DR.BOSU RARES ALEXANDRU	
71	ASISTENT PRINCIPAL	MEDICALA	5 S	1	MORAR MARIANA	AS.SEFA
72	ASISTENT PRINCIPAL	MEDICALA	5 S	1	POP LEONICA	
73	ASISTENT PRINCIPAL	MEDICALA	5 S	1	TOTOS EVA	
74	ASISTENT PRINCIPAL	MEDICALA	5 PL	1	CHEREJI CLAUDIA	
75	ASISTENT PRINCIPAL	MEDICALA	5 PL	1	SABAU VALERIA MELANIA	
76	ASISTENT PRINCIPAL	MEDICALA	5 PL	1	PACURAR MONICA	
77	ASISTENT PRINCIPAL	MEDICALA	5 S	1	CHERECHES ANA SILVIA	CIM DET.- BLOC OP
78	ASISTENT PRINCIPAL	MEDICALA	5 PL	1	HAIUC CALIN NELU	BLOC OP
79	ASISTENT PRINCIPAL	MEDICALA	5 PL	1	POP CORNELIU RADU	
80	ASISTENTA	MEDICALA	0 PL	1	VACANT	BLOC OPERATOR
81	ASISTENTA	MEDICALA	1 PL	1	RAD FLAVIA	
82	ASISTENTA	MEDICALA	1 PL	1	HORVATH KRISZTINA ZSOFIA	
83	ASISTENTA	MEDICALA	0 PL	1	VACANT	BLOC OPERATOR
84	INFIRMIERA		3 M	1	CIOBAN LENUTA	
85	INFIRMIERA		5 M	1	TRIF ILEANA	
86	INFIRMIERA		5 M	1	GASPAR GYONGYVER	
87	INFIRMIERA		5 M	1	CHEREJI CARMEN MARIANA	BLOC OPERATOR
88	INFIRMIERA		5 M	1	BALOG LUMINITA GINA	BLOC OPERATOR
89	INFIRMIERA DEBUTANTA		5 M	1	TOTH CRISTINA-DELIA	
90	INFIRMIERA DEBUTANTA		1 M	1	DEAC IOANA-LACRIMIOARA	
91	INFIRMIERA DEBUTANTA		5 M	1	TAKACS GABRIELA	
92	INFIRMIERA DEBUTANTA		0 M	1	VACANT	
	TOTAL			29		
	SECTIA OBSTETRICA - GINECOLOGIE cu Compartiment NEONATOLOGIE					
	Nr. paturi = 25 din care 20 paturi Obstetrica-Ginecologie si 5 paturi Neonatologie - Sala de nastere					
93	MEDIC PRIMAR	OBS-GINEC	3 S	1	DR.CAMARASAN OVIDIU ANDREI	SEF SECTIE
94	MEDIC PRIMAR	OBS-GINEC	5 S	1	DR.CIUTRE DOREL	CONTRACT PFA
95	MEDIC SPEC.	OBS-GINEC	2 S	1	VACANT	
96	MEDIC SPEC.	OBS-GINEC	2 S	1	VACANT	
97	MEDIC SPEC.	NEONATOLOGIE	2 S	1	DR.PURCAR ANAMARIA CRINA	
98	ASISTENT PRINCIPAL	OBS-GINEC.	5 S	1	GROSOS DOINA MARIA	AS.SEFA
99	ASISTENT PRINCIPAL	OBS-GINEC.	5 PL	1	SIMUT AURICA GABRIELA	
100	ASISTENT PRINCIPAL	MEDICALA	5 PL	1	CIORDAS DANIELA	
101	ASISTENT PRINCIPAL	MEDICALA	5 PL	1	TEGZES IOANA LAURA	
102	ASISTENT PRINCIPAL	MEDICALA	5 S	1	ARDELEAN IONELA MARIA	
103	ASISTENT PRINCIPAL	MEDICALA	5 PL	1	SZEKELY NICULINA	
104	ASISTENTA	MEDICALA	0 PL	1	POP LORENA TANIA	
105	ASISTENTA	MEDICALA	0 PL	1	POP NAOMI	
106	ASISTENT PRINCIPAL	MEDICALA	5 PL	1	HEREDEA VIORICA	COMP.NEONAT.
107	ASISTENT PRINCIPAL	MEDICALA	5 S	1	MEDESAN ELENA	COMP.NEONAT.
108	ASISTENT PRINCIPAL	MEDICALA	5 PL	1	BONCIDAI KATALIN	CIM SUSP
109	ASISTENT PRINCIPAL	MEDICALA	5 S	1	MUDURE MARIA	COMP.NEONAT.
110	ASISTENT PRINCIPAL	MEDICALA	5 S	1	CHERECHES CRINA PAULA	COMP.NEONAT.
111	ASISTENT PRINCIPAL	MEDICALA	5 PL	1	ROSAN MIHAELA	COMP.NEONAT.
112	INFIRMIERA		5 M	1	MOLNAR ILDIKO	
113	INFIRMIERA		5 M	1	TIGLEA DANIELA	
114	INFIRMIERA		5 M	1	CRISAN CARMEN	
115	INFIRMIERA		5 M	1	BALOG FLORICA	
116	INFIRMIERA		5 M	1	PASCA VIORICA	
117	INFIRMIERA		3 M	1	NICOLOFF FLORINA	
	TOTAL			25		
	SECTIA PEDIATRIE					
	NR.PATURI = 35					
118	MEDIC SPECIALIST	PEDIATRIE	3 S	1	DR.VINCZE AGOTA KINGA	SEF SECTIE
119	MEDIC SPEC.	PEDIATRIE	3 S	1	DR.GOANGA SAMUEL	
120	MEDIC SPEC.	PEDIATRIE	3 S	1	DR.DOBAI LAURA-ANDREEA	
121	MEDIC SPEC.	PEDIATRIE	2 S	1	VACANT	
122	ASISTENT PRINCIPAL	PEO.AS.SEFA	5 S	1	BOSCA MIRELA - FELICIA	AS.SEFA
123	ASISTENT PRINCIPAL	PEDIATRIE	5 PL	1	VERES POP LENA	CIM DET
124	ASISTENT PRINCIPAL	PEDIATRIE	5 PL	1	OLARIU MARIANA	
125	ASISTENT PRINCIPAL	PEDIATRIE	5 S	1	SIRCA MARIANA-R.	

126	ASISTENT PRINCIPAL	PEDIATRIE	5 S	1	CHIS ADRIANA	
127	ASISTENT PRINCIPAL	PEDIATRIE	5 PL	1	BALLA EVA	
128	ASISTENT PRINCIPAL	MEDICALA	5 S	1	CIGHI MARIA	
129	ASISTENT PRINCIPAL	MEDICALA	5 S	1	CRISAN CLAUDIA	
130	ASISTENT PRINCIPAL	MEDICALA	5 PL	1	ZAHA MARIANA	
131	ASISTENT PRINCIPAL	MEDICALA	5 PL	1	LAZAR ANNA ANGYAL	
132	ASISTENT	MEDICALA	1 PL	1	GASPAR NOEMI EVA	
133	ASISTENT	MEDICALA	0 PL	1	VACANT	
134	INFIRMIERA		5 M	1	MOLDOVAN SALONICA	
135	INFIRMIERA		4 M	1	CIMPAN ADRIANA	
136	INFIRMIERA		4 M	1	TURCAS ANDREEA	
137	INFIRMIERA		5 M	1	GHEI VIOLETA-VIORICA	
138	INFIRMIERA		0 G	1	VACANT	
139	INFIRMIERA		4 M	1	OPRIS RODICA CORINA	
140	INFIRMIERA		0 M	1	VACANT	
	TOTAL			23		
	COMPARTIMENT A.T.I. + UTS					
	Nr.paturi = 10					
141	MEDIC PRIMAR	ATI	5 S	1	DR.MIRCIOIU DORU VIOREL	CIM DET.
142	MEDIC PRIMAR	ATI	4 S	1	DR.BUTCOVAN ALEXANDRA	
143	MEDIC SPECIALIST	ATI	2 S	1	VACANT	
144	ASISTENT PRINCIPAL	MEDICALA	5 S	1	GURZAU MARIA	AS. COORDONATOR
145	ASISTENT PRINCIPAL	MEDICALA	5 S	1	MAN VIORICA	
146	ASISTENT PRINCIPAL	MEDICALA	5 S	1	DEAC LORENA GEORGETA	
147	ASISTENT PRINCIPAL	MEDICALA	5 PL	1	BIRIS FLORICA CARMEN	
148	ASISTENT PRINCIPAL	MEDICALA	5 PL	1	BUZA ELISABETA IULIA	
149	ASISTENT PRINCIPAL	MEDICALA	5 PL	1	VEDINAS IOANA	
150	ASISTENT PRINCIPAL	MEDICALA	5 PL	1	PERNES DANIELA	
151	ASISTENT PRINCIPAL	MEDICALA	5 S	1	SZEKRENYES IBOLYA	COMP. UTS
152	ASISTENTA	MEDICALA	5 PL	1	ZAHA MARIANA SORINELA	COMP. UTS
153	ASISTENT	MEDICALA	0 PL	1	VACANT	
154	INFIRMIERA		5 M	1	DANILA CSILLA	
155	INFIRMIERA		5 M	1	JAKAB ANA	
156	INFIRMIERA		5 M	1	PIROS ANA	
157	INFIRMIERA		5 M	1	LORINCZ MAGDOLNA	
158	INFIRMIERA		5 M	1	POSCSVEILER MARIANA	
159	INFIRMIERA		5 M	1	ARDELEAN LUMINITA	
	TOTAL			19		
	COMPARTIMENT NEUROLOGIE					
	Nr.paturi = 15					
160	MEDIC PRIMAR	NEUROLOGIE	4 S	1	DR.EGRI ERIKA EVA	MEDIC COORD.
161	MEDIC SPEC.	NEUROLOGIE	2 S	1	DR.POCAN VALENTIN MIHAI	
162	ASISTENT PRINCIPAL	MEDICALA	5 PL	1	TORJE LIA LUMINITA	
163	ASISTENT PRINCIPAL	MEDICALA	5 S	1	DEBRE FELICIA	CIM DET
164	ASISTENT PRINCIPAL	MEDICALA	5 PL	1	DEBRE ERIKA	
165	ASISTENT PRINCIPAL	MEDICALA	2 PL	1	CSOLOGANY FELIX ANDREA	
166	ASISTENT	MEDICALA	3 PL	1	SARCA ANCA	
167	ASISTENT	MEDICALA	0 PL	1	VACANT	
168	ASISTENT	MEDICALA	0 PL	1	VACANT	
169	INFIRMIERA		5 M	1	PETRUS SIMONA	
170	INFIRMIERA		0 M	1	VACANT	
171	INFIRMIERA		0 M	1	VACANT	
172	INFIRMIERA		0 M	1	VACANT	
173	INFIRMIERA		0 M	1	VACANT	
	TOTAL			14		
	COMPARTIMENT RECUPERARE, MEDICINA FIZICA SI BALNEOLOGIE					
	Nr.paturi = 20					
174	MEDIC PRIMAR	RECUP.MED.FIZ	5 S	1	DR.GASPAR GHEORGHE	CIM DET.
175	MEDIC PRIMAR	RECUP.MED.FIZ	3 S	1	DR.GASPAR BOROKA PANNA	MEDIC COORD.
176	ASISTENT PRINCIPAL	MEDICALA	5 S	1	BOITOR RODICA	
177	ASISTENT PRINCIPAL	MEDICALA	5 S	1	MERCAS MARIA	
178	ASISTENT PRINCIPAL	MEDICALA	5 S	1	SILAGHI LAVINIA ANA	
179	ASISTENT PRINCIPAL	MEDICALA	5 S	1	TORKOS RITA	
180	ASISTENT PRINCIPAL	MEDICALA	5 PL	1	CHILIMENT ERIKA	
181	INFIRMIERA		5 M	1	OLTEAN STELA	
182	INFIRMIERA		4 M	1	KOVACS ECATERINA	
	TOTAL			9		
	CAMERA DE GARDA					
183	MEDIC PRIMAR	MED.INTERNA	5 S	1	DR.PUSCAS IULIANA CARMEN	CONTRACT PFA
184	MEDIC SPECIALIST	MED.DE URGEN	2 S	1	VACANT	
185	MEDIC SPECIALIST	MED.DE URGEN	2 S	1	VACANT	
186	ASISTENT PRINCIPAL	MEDICALA	5 S	1	POP MIHAELA	AS.COORDONATOR
187	ASISTENT PRINCIPAL	MEDICALA	5 PL	1	BAKAI SANDOR	
188	ASISTENT PRINCIPAL	MEDICALA	5 PL	1	DRAGAN MELINDA ERIKA	
189	ASISTENT PRINCIPAL	MEDICALA	2 PL	1	PAP ATILA	
190	ASISTENT PRINCIPAL	MEDICALA	5 S	1	KESERU ADELA	
191	ASISTENT PRINCIPAL	MEDICALA	4 PL	1	DAN-BOSCA CRINA	
192	ASISTENT PRINCIPAL	MEDICALA	4 PL	1	OPREA MARIA MIHAELA	
193	ASISTENT PRINCIPAL	MEDICALA	5 PL	1	CIATARAS MIRELA-FELICIA	

194	ASISTENT	MEDICALA	5 PL	1	CHIS IOAN	
195	INFIRMIERA		5 M	1	VERES MARIA DANIELA	
196	INFIRMIERA		4 M	1	KULCSAR ELISABETA EVA	
197	INFIRMIERA DEBUTANTA		5 M	1	OPRIS ANGELA	
198	INFIRMIERA DEBUTANTA		0 M	1	CIMPAN MONICA-MARIANA	
199	BRANCARDIER		5 M	1	BOLOGA OVIDIU	
200	BRANCARDIER		5 M	1	TOTOS MIRCEA	
	TOTAL			18		
	LABORATOR RECUPERARE, MEDICINA FIZICA SI BALNEOLOGIE					
201	FIZIOKINETOTERAPEUT		2 S	1	PUSCAS NICOLETA	
202	FIZIOKINETOTERAPEUT		0 S	1	VACANT	
203	FIZIOKINETOTERAPEUT		2 S	1	BIHARI ERZSEBET	CIM SUSP.
	TOTAL			3		
	FARMACIE spital cu circuit inchis					
204	FARMACIST SEF	FARMACIE	5 S	1	BALANEAN DOINA	
205	ASIST.PRINC.	MEDICALA	5 S	1	BENTE TATIANA	CIM DET.
206	ASISTENTA	FARMACIE	5 PL	1	ROGOZ SIMONA	
207	ASISTENT	FARMACIE	3 PL	1	LESU IONUT OLIMPIU	
208	INGR.CURAT.		5 M	1	DULL MARIA	
	TOTAL			6		
	COMPARTIMENT EVALUARE SI STATISTICA MEDICALA					
209	ECONOMIST IA		5 S	1	KUN DANIELA	
210	ECONOMIST IA		5 S	1	COLTAU FLORINA	
211	ECONOMIST IA		5 S	1	DONCA DIANA	
212	ECONOMIST IA		5 S	1	MATEI ADRIANA	
	TOTAL			4		
	COMPARTIMENT CPIAAM					
213	MEDIC PRIMAR	BOLI INFECT.	5 S	1	VACANT - VACANT TEMPORAR	
214	ASIST.PRINC.	MEDICALA	5 S	1	PREDOIU IOAN	CIM DET.
	TOTAL			2		
	COMPARTIMENT COMUN SPITAL					
215	ASISTENT SEF SPITAL	MEDICALA	II S	1	LAPOHOS HIDEG ANDREI	
216	TEHNICIAN PRINC.	APARAT.MED.	5 M	1	TALPOS DUMITRU	
217	REGISTRATOR	MEDICAL	5 M	1	BUZA IONEL	
218	REGISTRATOR	MEDICAL	5 M	1	STAN ECATERINA	
219	REGISTRATOR	MEDICAL	5 M	1	TULBURE IOANA	
220	LIFTIER	MUNCITOR III	5 M	1	BAICAN MIHAELA LIANA	
221	ARHIVAR		5 M	1	MARTIN RODICA	
222	INFIRMIERA		5 G	1	MANDEL ERIKA	
223	INGR.CURAT.		5 M	1	IUONAC DORINA	
224	ASISTENT	MEDICALA	0 PL	1	VACANT	STATIA DE STERILIZARE
225	ASISTENT	MEDICALA	0 PL	1	VACANT	STATIA DE STERILIZARE
226	INFIRMIERA		0 M	1	VACANT	STATIA DE STERILIZARE
	TOTAL			12		
	APARAT FUNCTIONAL (TESA)					
	COMPARTIMENT RUNOS					
227	ECONOMIST IA		5 S	1	ALEXUTAN MARIA VIRGINIA	
228	ECONOMIST IA		5 S	1	SABAU EVA	
229	ECONOMIST IA		5 S	1	VACANT	
	TOTAL			3		
	COMPARTIMENT FINANCIAR - CONTABIL					
230	ECONOMIST IA		5 S	1	VACANT - VACANT TEMPORAR	
231	ECONOMIST IA		5 S	1	LAZAR MARIA	
232	ECONOMIST IA		5 S	1	PATRAS MARIA	
	TOTAL			3		
	SERVICIU TEHNIC-ADMINISTRATIV					
233	SEF SERVICIU		II S	1	VACANT	
				1		
	COMPARTIMENT APROVIZIONARE-TRANSPORT-ADMINISTRATIV					
234	REFERENT I		5 S	1	CRISAN VASILE	CIM DET.
235	SECRETAR-DACT.IA		5 M	1	VACANT	
236	SEF DEPOZIT I		5 M	1	PUSCASIU GABRIELA	
237	SOFER I		5 M	1	BLAGA JOSIF	CIM DET.
	TOTAL			4		
	COMPARTIMENT ACHIZITII PUBLICE, CONTRACTARE					
238	ANALIST PROGR.IA		4 S	1	MARUSCA ANGELICA	
239	REFERENT II		5 S	1	CIORBA GABRIELA	
				2		

COMPARTIMENT JURIDIC, CONTENCIOS, CULTE					
240	CONSILIER JURIDIC IA		5 S	1	VACANT
241	PREOT GR.I		5 S	1	POP PETRU MIRCEA
	TOTAL			2	
COMPARTIMENT SECURITATEA MUNCII, PSI, PROT.CIVILA, SIT.URGENTA					
242	TEHNICIAN	SSM si PSI	0 M	1	VACANT
				1	
COMPARTIMENT INFORMATICA					
243	ANALIST AJUTOR IA		5 PL	1	PRIAN IOAN NICOLAE
				1	
PERSONAL INTRETINERE, DESERVIRE					
244	MUNCITOR I	ZIDAR	5 G	1	SAS MARIAN
245	MUNCITOR I	FOCHIST	5 M	1	SZABO IOSIF
246	MUNCITOR I	FOCHIST	5 M	1	MURESAN MARINEL
247	MUNCITOR II	ZUGRAV	5 M	1	COROIAN IOAN
248	MUNCITOR II	TIMPLAR	5 G	1	BEDE IULIU
249	MUNCITOR II	MECANIC	5 M	1	VACANT
250	MUNCITOR III	INSTALATOR	0 M	1	VACANT
251	MUNCITOR III	ELECTRICIAN	0 G	1	VACANT
252	SOFER I	SOFER	5 M	1	LAZAR STEFAN
	TOTAL			9	
BLOC ALIMENTAR					
253	ASISTENTA	NUTRITIE SI DIE	2 S	1	BALAZS ANETT
254	MUNCITOR II	BUCATAR	5 M	1	VAVRITA MARIA
255	MUNCITOR IV	BUCATAR	0 M	1	CHIS IOANA LAURA
256	MUNCITOR IV	BUCATAR	5 M	1	RACOLTA ANA AURICA
257	MUNCITOR IV	BUCATAR	5 M	1	MERCAS IOANA ELENA
258	MUNCITOR IV	BUCATAR	0 M	1	VACANT
	TOTAL			6	
SPALATORIE-LENJERIE					
259	SPALATOREASA		5 M	1	BOSCA MARINELA
260	SPALATOREASA		0 G	1	VACANT
261	SPALATOREASA		5 M	1	RAD LUCICA
262	LENJEREASA	MUNCITOR III	0 G	1	VACANT
	TOTAL			4	
STRUCTURA SPITALIZARE DE ZI					
263	ASISTENT	MEDICAL	0 PL	1	VACANT
264	ASISTENT	MEDICAL	0 PL	1	VACANT
265	INFIRMIERA		0 M	1	VACANT
COMPARTIMENT MANAGEMENTUL CALITATII					
266	MEDIC SPECIALIST		0 S	1	VACANT
267	ASISTENT	MEDICAL	0 PL	1	VACANT
268	REFERENT DE SPECIALITATE II		5 S	1	COZMA ELENA MARIANA
	TOTAL			3	
	TOTAL GENERAL			268	

MANAGER,
DR.CHIM.MARCELA COLTAU

INTOCMIT,
EC.ALEXUTAN MARIA

STAT DE FUNCTII
valabil cu data de 01.05.2026

CAPITOL ASIG. SANATATE
ASISTENTA MEDICALA SPITALICEASCA
Cf Legii - cadru 153/2017 si a OUG 19/2024

Nr. Crt.	Funcția, gradul sau treapta profesională conform Legii-cadru 153/2017 și a OUG 19/2024	Specialitatea	Gradatia	Niv.studii	Cuantiu post	Numele și prenumele	Observatii
0	1	2	3	6	7	13	14
	CAB.OBST.GINEC.						
1	ASISTENTA PRINC	MEDICALA	5	PL	1	BARA ILONA ENIKO	
	Total				1		
	CAB.MED.INTERNA	I și II					
2	ASIST.PRINC.	MEDICALA	5	S	1	MUJ MARIANA	CABINET I
3	ASIST.PRINC.	MEDICALA	5	S	1	BONTE MIHAELA	CABINET II
	Total				2		
	CAB.DERMATO-VEN						
4	MEDIC SPECIALIST	DERMATOVENER	2	S	1	VACANT	
5	ASISTENT MED.	MEDICAL	0	PL	1	VACANT	
	Total				2		
	CAB.PEDIATRIE						
6	ASIST.PRINC.	MEDICALA	5	PL	1	ROSAN VIOLETA	
	Total				1		
	CAB.PSIHIATRIE						
7	MEDIC PRIMAR	PSIHIATRIE	4	S	1	DR.BIRIS-BURNETE ALEXANDRA	
8	ASISTENT MED.	MEDICAL	0	PL	1	VACANT	
	Total				2		
	CAB. CHIRURGIE GEN.						
9	ASISTENTA	MEDICALA	3	PL	1	COBZAS SIMONA ADRIANA	
	Total				1		
	CAB. O.R.L.						
10	MEDIC SPECIALIST	O.R.L.	2	S	1	VACANT	
11	ASISTENT MED.	MEDICAL	0	PL	1	VACANT	
	Total				2		
	CAB. OFTALMOLOGIE						
12	MEDIC SPECIALIST	OFTALMOLOGIE	2	S	1	VACANT	
13	ASISTENT MED.	MEDICAL	0	PL	1	VACANT	
	Total				2		
	CAB. ORTOPEDIE TRAUMATOLOGIE						
14	ASIST.PRINC.	MEDICAL	5	S	1	TUSAN VIORICA	
	Total				1		
	CAB. NEUROLOGIE						
15	ASIST.PRINC.	MEDICALA	5	S	1	MURESAN DELIA	
	Total				1		
	CAB. RECUPERARE, MEDICINA FIZICA SI BALNEOLOGIE						
16	ASISTENT MED	MEDICAL	0	PL	1	VACANT	
	Total				1		
	CAB.PNEUMOLOGIE						
17	MEDIC PRIMAR	PNEUMOLOGIE	4	S	1	SCUTELNICU DELIA	program 5 ore
18	ASIST. PRINC.	MEDICALA	5	PL	1	PAPP GHEORGHINA	program 5 ore
	TOTAL				2		

	CAB.REUMATOLOGIE					
19	MEDIC SPECIALIST	REUMATOLOGIE	2 S		1	VACANT
20	ASISTENT MED.	MEDICAL	0 PL		1	VACANT
	TOTAL				2	
	CAB.GASTROENTEROLOGIE					
21	ASISTENT MED.	MEDICAL	0 PL		1	VACANT
	TOTAL				1	
	CABINET DIABET ZAHARAT,NUTRIȚIE ȘI BOLI METABOLICE					
22	MEDIC SPECIALIST	DIABET ZAHARAT	2 S		1	VACANT
					1	
	CAB.CARDIOLOGIE					
23	MEDIC SPECIALIST	CARDIOLOGIE	2 S		1	VACANT
					1	
	CAB.ENDOCRINOLOGIE					
24	MEDIC SPECIALIST	ENDOCRINOLOG	2 S		1	DR.GIRBE ALEXANDRA
25	ASISTENT PRINC.	MEDICAL	5 PL		1	JULA GABRIELA
					2	
	CAB.NEONATOLOGIE					
26	ASISTENT MED.	MEDICAL	0 PL		1	VACANT
					1	
	CAB.UROLOGIE					
27	ASISTENT MED.	MEDICAL	0 PL		1	VACANT
					1	
	CABINET BOLI INFECTIOASE					
28	MEDIC SPECIALIST	BOLI INFECTIOASE	2 S		1	DR.FILIP LUCIAN VASILE
	Total				1	
	Total general				28	

Ambulator integrat cu 20 cabinete,

Nota: Niv.st. - reprezinta nivel studii,

C.post - reprezinta quantum post,

MANAGER,
DR.CHIM.MARCELA COLTAȘ

INTOCMIT,
ALEXUTANU MARIA

**SPITAL ORASANESC "Prof.Dr.Ioan Puscas"
SIMLEU SILVANIEI
BUGETUL DE STAT (TRANSFERURI)**

**APROBAT
ORDONATOR DE CREDITE
IERARHIC SUPERIOR**

**STAT DE FUNCTII
valabil cu data de 01.05.2026**

Valabil conform Legii-cadru 153/2017 si a OUG 19/2024

Nr. crt.	Functia, gradul sau treapta profesionala conform Legii-cadru 153/2017 si OUG 19/2024	Specialitatea	Grati a	Nivel studii	Cuant um post	Numele si prenumele	OBS.
0	1	2	3	6	7	22	
MEDICI REZIDENTI PE POST							
1	MEDIC REZID. AN I	EPIDEMIOLOGIE	2	S	1	TAMSA MIHAELA-MARIA	
2	MEDIC REZID. AN I	PEDIATRIE	0	S	1	CIUPE RAUL-DAN	
3	MEDIC REZID. AN I	PEDIATRIE	0	S	1	IUGA SIMINA	
4	MEDIC REZID. AN I	CARDIOLOGIE	0	S	1	MURESAN BIANCA-ANTONIA	
5	MEDIC REZID. AN I	RADIOLOGIE	0	S	1	NICOARA COSMINA-IOANA	
6	MEDIC REZID. AN I	DIABET ZAHARAT	0	S	1	GORGAN LORENA-FLORINA	
7	MEDIC REZID. AN I	ATI	0	S	1	POPA DRAGOS	
8	MEDIC REZID. AN I	OFTALMOLOGIE	0	S	1	FERNEA ADRIAN-MARIAN	
9	MEDIC REZID. AN I	GINEC.	0	S	1	GROSU GEORGIANA-MARIA	
10	MEDIC REZID. AN I	MED. DE LAB.	0	S	1	BALEANU IULIA	
11	MEDIC REZID AN V	REUMATOLOGIE	2	S	1	FERARU-OANE GABRIELA-FLORINA	
12	MEDIC REZID AN IV	RECUPERARE	2	S	1	CHIS (MURESAN) IOANA	
13	MEDIC REZID AN III	RADIOLOGIE	1	S	1	PIU ADELA REBECA	CIM SUSP
Total					13		
CAB. PLANIFICARE FAMILIALA							
1	MEDIC SPECIALIST	MED.GEN.	5	S	1	RADU MARIA BRANDUSA	Comp.Planif.fam
Total					1		
DISPENSAR T.B.C.							
2	MEDIC PRIMAR	PNEUMOLOGIE	4	S	0,28	SCUTELNICU DELIA ANA	program 2 ore
3	ASIST. PRINC.	MEDICALA	5	PL	0,25	PAPP GHEORGHINA	program 2 ore
Total					1		
TOTAL GENERAL					15		

NOTA: Posturile de medici rezidenti se regasesc in posturile vacante din sectii, compartimente, laboratoare, cabinete - ambulator integrat.

Niv.st.- reprezinta nlvel studii;

C.post - reprezinta cuantum post;

MANAGER,
DR.CHIM.MARCELA COLTAU

INTOCMIT,
EC.ALEXUTAN MARIA

Spital Categoria a IV-a

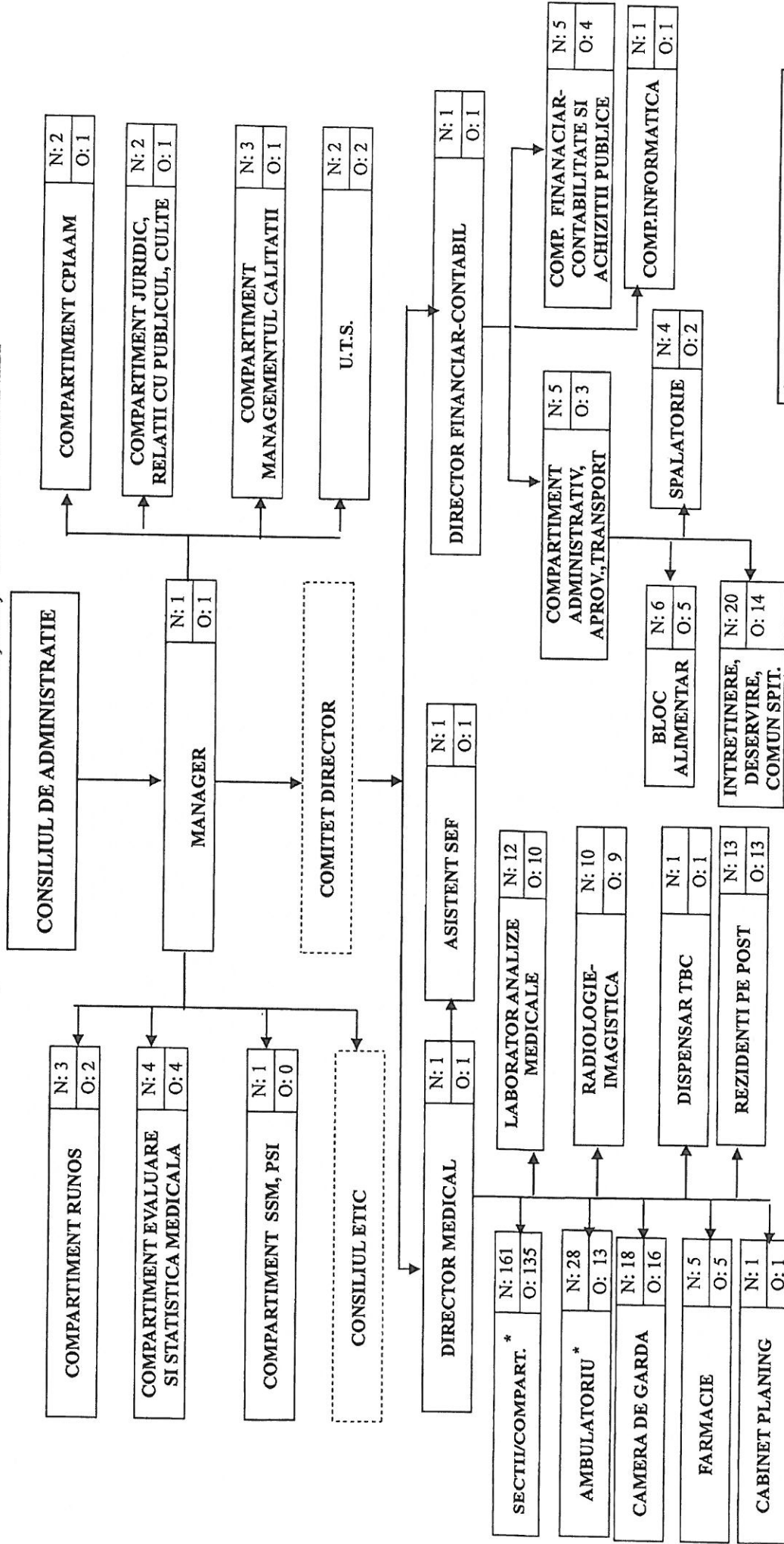
Total paturi: 215 – spit.continuă; 10-spit.zi

Data:01.05.2026

APROBAT,
CONSILIUL LOCAL SIMLEU SILVANIEI

ORGANIGRAMĂ

SPITALUL ORĂȘENESC “PROF.DR.IOAN PUȘCAȘ” SIMLEU SILVANIEI



Total posturi normate	311
Total posturi ocupate din care Rezidenti	247 13
Total posturi vacante	64

- Structuri functionale =
(nu au posturi normate)

Legenda: N= total posturi normate
O = posturi ocupate
* = Anexa 1 -Sectii cu paturi si Ambulatoriu

ORGANIGRAMĂ
SECTII/COMPARTIMENTE CU PATURI SI AMBULATORIUL INTEGRAT

